

CERTIFIED RECORD OF LAND CORNER MONUMENTATION

History of original corner establishment: *

The original corner was established by Rufus S. Moore in 1881 under Contract No. 382, dated March 1881.

The original notes state:

North bet secs 17 & 18

80.00 Set a basalt stone 18x10x10 and made mound of stone for cor to secs 7, 8, 17, & 18.

DIAGRAM

T10S R31E

S71S8

----+----

S181S17

Description of corner evidence found:

In the vicinity of the expected corner position, I found a very old mound of stone with an 18x10x8 (18x10x10) stone, no visible marks at the intersection of an old fenceline. This position fits very well with a creek call 5 chains South and with other corners found to the North and South.

Description of monument and accessories I establish to perpetuate the original location of this corner:

Set a 2 1/2"x28" aluminum monument 16" in the ground in a mound of stone.

I establish new bearing trees:

A 9" Juniper bears S 66-3/4° E, 103.4 ft, scribed T10SR31ES17BT.

A 20" Juniper bears N 73 1/2° W, 82.1 ft, scribed T10SR31ES7BT.

T10S R31E

S71S8

----+----

S181S17

PLS1918

1988

Sun Cadastral Survey, Cont. No. 53-04H1-7-4011

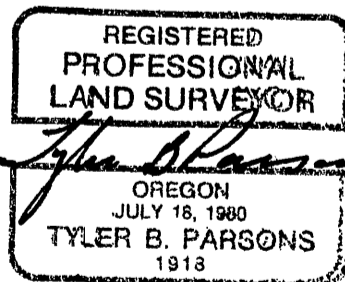
Field Book: 4-66 & 7-2

Work accomplished: 10/23/88

Witnesses: Tyler Parsons, Louise Parsons, Lowell Seaders

New BTs have 3/4" brass washers marked PLS1918 attached to the BT blaze, faces and bands painted with red tree marking paint, and BT tags and Land Survey Monument signs. A steel fence post with Land Survey Monument sign is driven approximately 3-5 feet from the corner.

PARSONS SURVEYING
1915 S.E. Stone Street
Corvallis, OR 97333
(503) 752-7515



Office of County Surveyor County of GRANT
State of OREGON, I hereby certify that the within instrument was filed in this office
for record on the 7th day of Feb, 1989

Robert D. Begett by _____
(COUNTY OFFICIAL) (DEPUTY)